

NASHOBA PARK

A Community Established by the Nonprofit



UPCOMING EVENTS

MONDAY, APRIL 5

Derek Mann's slide presentation, "The Story of the Vatican," at 2:00 P.M.

TUESDAY, APRIL 13

Professional Painter Mike Lavin presents his "Art for Seniors" show at 2:00 P.M.



WEDNESDAY, APRIL 21

Pianist and piano teacher Denitza Vassileva performs for us and showcases some of her talented students at 2:00 P.M.
Public is welcome!

TUESDAY, APRIL 27

Guitarist and vocalist Tony Rarus performs hits from the 30's through the 60's at 2:00 P.M.



RESIDENT PROFILE



Kathleen Cloutier was born in Cincinnati, Ohio but grew up in Bellingham, Massachusetts. She graduated from Bellingham High School as well as the Nursing School at Framingham Union Hospital. Kathy was a nurse in the operating room at Nashoba Hospital for 20 years and became the director of surgical services. Prior to that, she worked in this very building when it was Ayer Hospital! She had the youngest of her five wonderful children here, too! Kathy has 12 grandchildren and one great granddaughter. She has always enjoyed music and recently sang a duet in our talent show. She likes to play games on her computer, compete in Bingo, and volunteer in our store. Kathy says that "everyone is very helpful and very nice" at Nashoba Park and would "wholeheartedly advise [others] to move here." She likes knowing that there is someone here 24 hours a day if she needs assistance. Kathy lived in Lunenburg for many years but is now happy to call Nashoba Park home.

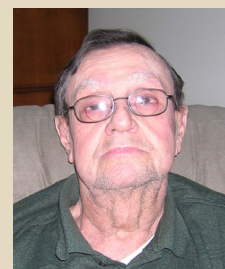
JOIN US! Thursday, April 15th at 2:00 P.M.

Pepperell Senior Center's "Hot Shots" singing group, led by music director & pianist Edie Tompkins, will perform springtime melodies for all to enjoy.

WELCOME, NEW RESIDENTS!



Olive Lawrence



David Murphy



ASSOCIATE PROFILE



Melissa Martin is a part-time certified nursing assistant at Nashoba Park. She became a CNA last year through the Health Occupations Program of The Center for Technical Education at Leominster High School and will be graduating in June. Melissa chose this path because she likes helping people. She loves the residents at Nashoba Park and enjoys helping them with anything and everything she can. Melissa has a variety of other interests. She played soccer for nine years and took tap, jazz and ballet classes for five years. She is a graduate of the Barbizon Modeling Center in Boston. She also loves to ride her Honda motorcycle and go four-wheeling with her boyfriend of 1-1/2 years, Robbie. Melissa is the daughter of Karen Steinmetz and the late Joe Martin of Leominster. She has two older siblings: a sister, Carolyn, and a brother, Craig.

Questions about making a tax-deductible gift?

Contact **Stephanie Burton**, executive director of Nashoba Park at 978-772-0707 or **George Mathieson**, director of development of Volunteers of America, Massachusetts at 617-390-0228

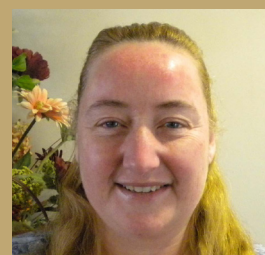


Volunteers of America
Massachusetts

ASSOCIATE OF THE MONTH

Congratulations to
Certified Nursing
Assistant

**Collette
Pierce!**



TALENT SHOW



Nashoba Park's Talent Show "Let us Entertain You" was a fun event for all. It included two soloists, three duets, and a trio performing old-time favorites. There were showtunes, original selections by one of our own residents, and a special Karaoke performance by an associate!



Left to right: **Roland St. Hilaire, Huck Moorehouse,** and Social Program Director **Kim Dee**; Singer-Songwriter **Barbara Anderson**; **Bud Winn** with his sister **Gloria**; Soloist **Susana Reyes**.



THINKING OF GOING GREEN?

SEND YOUR EMAIL ADDRESS TO INFO@NASHOBAPARK.COM AND WE WILL EMAIL THIS NEWSLETTER TO YOU EACH MONTH.

A Community Established by the Nonprofit



Volunteers of America
Massachusetts

15 Winthrop Avenue • Ayer, Massachusetts 01432 • 978-772-0707

WWW.SENIORLIVINGRESIDENCES.COM

Edited by Kimberley Dee, Social Program Director